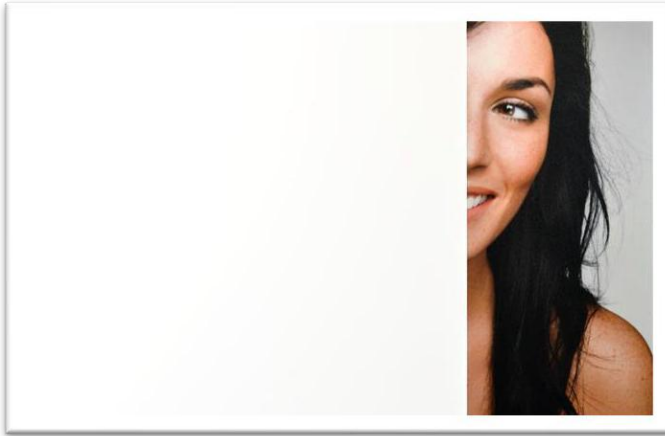


## SOLYX® Glass Finishes SXWF-WO Whiteout



### Product Description

SOLYX® SXWF-WO Whiteout is an opaque, white, polyester film with a semi-gloss finish. It is ideal for obscuring direct visibility while allowing some light transmission.

#### Specifications

Product Code	SXWF-WO
Product Family	Design-Free
Film Type	Polyester
Adhesive Type	Pressure-Sensitive
Usage	Interior or Exterior
Available Width(s)	60", 72"
Full Roll Length	100 linear feet (30.5m)
Thickness	2 mil
Shading Coefficient	0.41
Visible Light Reflection	15%
Visible Light Transmission	2-2.5%
UV Transmission	0%
Total Solar Energy Rejected	46%
Solar Energy Absorbed	31%
Glare Reduction	85%

### Product Construction

#### Face Film

2 mil Polyester

#### Adhesive

Clear, Pressure-Sensitive

#### Release Liner

Silicone Coated

### Product Details

SOLYX® SXWF-WO Whiteout is an opaque, white, polyester film with a semi-gloss finish. This durable film is supplied with a silicone coated liner which protects the clear, pressure-sensitive adhesive, and is designed for application to interior glass, single- or double-pane, exterior facing glass, and exterior glass. Safe for use on all types of glass without the fear of thermal shock glass breakage, this film is ideal for privacy, decorative, or architectural applications.

#### Flammability Rating

This product meets ASTM E84 and is classified as Class A as defined in NFPA 101, Life Safety Code®.

#### LEED Credit EQ 4.1 Low Emitting Materials, Adhesives & Sealants

This product has zero VOC content according to 40 CFR 59, Subpart D (EPA method 24).

### Installation and Warranty

#### Installation

Installation should be in accordance with the manufacturer's installation instructions. This film is applied using the same tools and techniques used for installing window tinting films.

#### Warranty

This SOLYX® product will be free from defects in material and manufacture for a period of five (5) years from the date of installation. Exterior applications have a three (3) year warranty. See warranty information for specific details.

### Product Distribution and Contact Information

#### Distribution

SOLYX® Decorative Films are available through authorized Installing Dealers, Distributors, or directly from Decorative Films, LLC.

Samples submitted upon request.

#### Contact Information

Decorative Films, LLC

1-888-657-5224

[www.decorativefilm.com](http://www.decorativefilm.com)